

## SINGLE MAST RANGE

The SINGLE MAST range "MOOVIT" provides an excellent balance between the reliability, ergonomics and safety expected by professionals. MANUVIT's ability to develop standard and bespoke accessories for handling reels, boxes, drums, etc. gives this range enormous potential.

**3 Lift heights :** 1200 – 1600 – 2000 mm  
**Lifting Capacity :** 80 – 150 – 200 kg  
**Material :** Steel/aluminium and stainless steel

### QUALITY CONTROLLED

The quality of the components ensures the reliability of our range and also its durability :  
 Components from France and Europe  
 2 years guarantee excluding wear parts  
 Lifting speed 165 mm/s with custom programming ability  
 Impressive autonomy : 10 hrs. with 10 cycles/hr. for a load of 150 kg (range between 10 and 20°C)

### GUARANTEED ERGONOMICS

Light, handy and compact  
 Range of standard and customised accessories

### EASY MAINTENANCE

- Maintenance free
- Availability of components for servicing
- Local maintenance and servicing

### ENVIRONMENTAL IMPACT

- Recycling rate close to 100 %

### OPTIMAL SAFETY



- Compliant with the Machinery Directive and ISO 3691-5
- Compliant with CNAM R367 Recommendation
- Free wheel

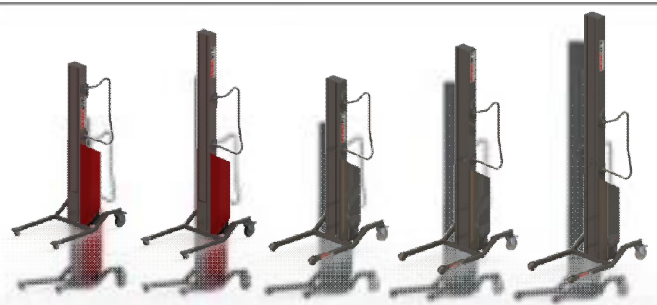


Steel / Alu range



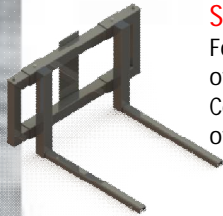
Stainless steel

www.manuvit.com



## STANDARD ACCESSORIES

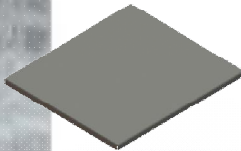
The entire range of accessories is deployed in two materials: Steel & Stainless Steel. Accessories are interchangeable and adapted to the LC of the MONOMAT.



**Sliding forks - 200 kg \***  
Forks with a lifting capacity of 200 kg \*  
Centre distance of 180 of 430 mm



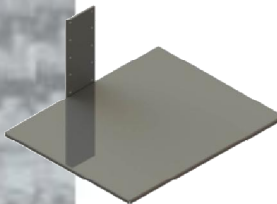
**The double sliding boom – 200 kg \***  
Lifting capacity of cylindrical loads up to 200 kg \* max in safety.  
Centre distance of 180 to 430 mm



**Platform on forks - 200 kg \***  
Additional equipment for sliding forks. The platform can be clipped on the forks thus achieving an intermediary support for adjusting the height of items.  
Size 500 x 450 mm.



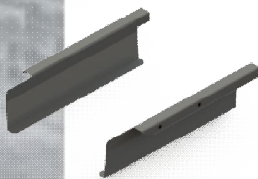
**Roller boom - 200 kg \***  
Enables displacement of an item with a minimum central bore of 65 mm. The roller facilitates loading and unloading of the item. Max. Capacity of 200 kg\*



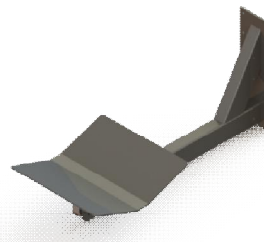
**Fix platform in stainless steel - 200 kg \***  
Platform attaches directly to the mast with a load capacity of 200 kg\*  
Size: 500 x 400 mm



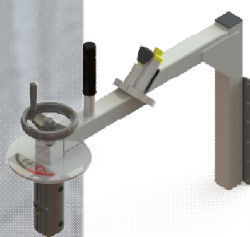
**Lifting hook - 100 kg**  
It is positioned on the roller boom presented above and provides a jib crane for handling loads with a ring or sling to a load of 100 kg\* max. in safety.



**Sliding plates - 200 kg \***  
Must-have accessory for handling plastic boxes, cardboard boxes, or other prismatic item with edges. Fits on sliding forks.



**The turning "V" plate - 100 kg**  
It is positioned on the roller boom shown above and enables the handling of cylindrical loads of 100kg\* max in safety.



**Drum turner - 90 kg**  
The drum turner enables the handling of rolls using an expandable jaw. This enables rolls to be lifted and turned from horizontal to vertical and vice versa by supporting it on its central axis. It has a lifting capacity of up to 90 kg\*  
For core : Ø70 mm and Ø76 mm



**Stainless drum turner - 60 kg**  
It enables you to turn buckets, jerry cans or drums from 20 to 30l.

*\*Caution: The lifting capacity depends on the LC of the device on which the accessory is mounted. It also depends on the position of the centre of gravity of the load with respect to the mast of the stacker on which it is mounted.*

«Development of standard and bespoke handling solutions. »